

IN-GROUND AUTOMATIC SLATTED COVER

ROLLFIT

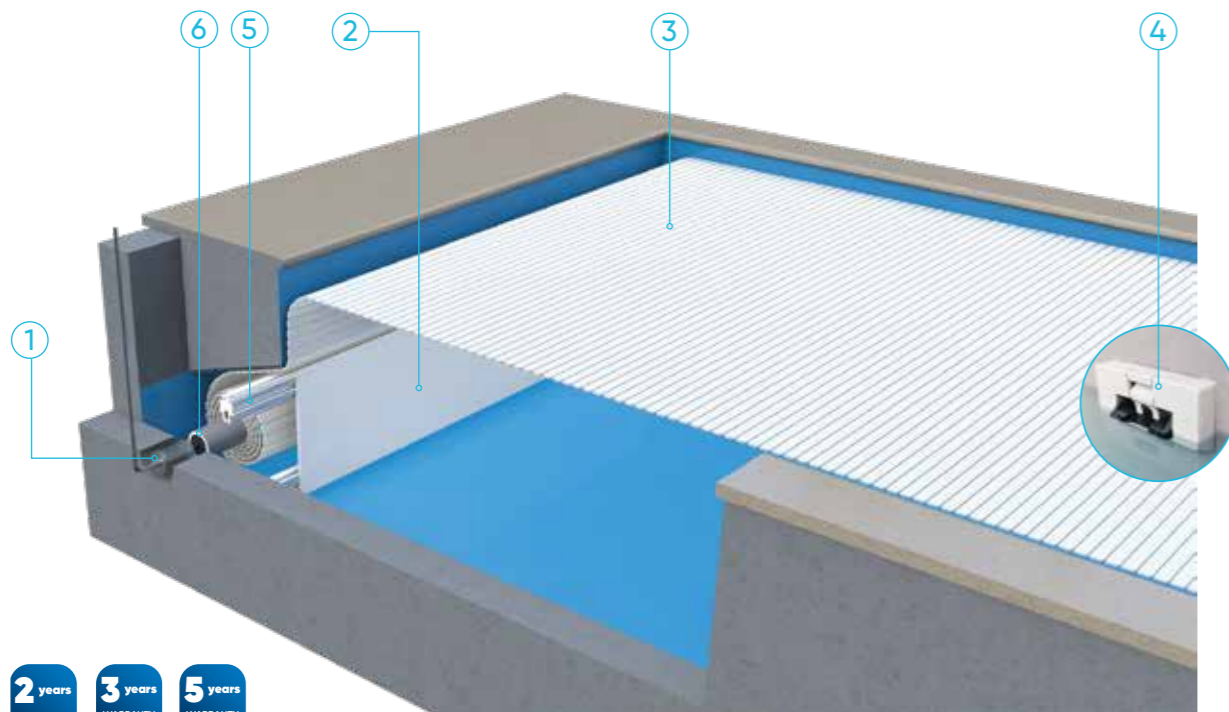
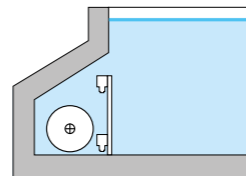


The in-ground automatic slatted cover hidden into a niche

IN-GROUND AUTOMATIC SLATTED COVER ROLLFIT

+ DISCREET

- Perfect integration into the pool. The Rollfit is sheltered in a niche, there is any loss of swimming space.



Cover available for pools from 3.00 x 3.00 m and up to 6.00 x 20.00 m.

1 MOTORISATION

- 2 motorisations and fixings available:
 - Motor in a dry pit - insert mount fixing.
 - Tubular motor - insert mount fixing.

Controlled by Wi-Key, key switch or LivePool (not compliant).

2 CASING

- PVC decking to be covered.

3 SLATS

- Opaque 84 PVC slats, solar polycarbonate slats or opaque 69 PVC slats.

4 LOCKING KITS

5 ALUMINIUM TUBE

6 ALUMINIUM BEAM

7 STOP FLOW

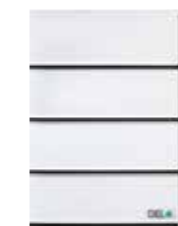
- Control of the filtration of the cover. It allows to stop the filter pump when the automatic cover motor is working.

Your slats choice

All our slats have a quality finish and are compliant with the NF P 90-308 standard.

Opaque 84 PVC slats

New standard for in-ground automatic slatted covers



White



Grey

Solar polycarbonate slats



Crystal black



Crystal blue



Crystal brown



Silver



Crystal



Crystal green

Opaque 69 PVC slats

Optional depending on your pool configuration (consult your swimming pool specialist)



White



Beige



Grey



Blue

USEFUL TO KNOW

Opt for solar polycarbonate slats to heat your pool water.

Why cover your pool?

- To reduce the water consumption by limiting the evaporation.
- To reduce the energy consumption.
- To make the cleaning easier & to reduce the use of chemical products.



Read carefully and keep for future reference.

Rollfit is a safety cover for swimming pools designed to keep children under the age of 5 out of the pool. This product is compliant with standard NF P 90-308. It is not a substitute for common sense or personal responsibility. It is not substitute for the vigilance of parents and/ or responsible adults, which remains the essential factor for the safety of young children. A child can drown in less than 3 minutes; no type of preventive measures can replace the monitoring and vigilance of a responsible adult.

Warranty: 5 years for the tubular motor and 3 years for the motor in dry pit. 3 years' warranty on opaque PVC 84 slats and opaque PVC 69 slats, and 5 years's warranty on the solar polycarbonate slats. The roller is warranted for 2 years, in accordance with our general terms of sale.

Order form: for the cover to be properly adjusted to the swimming pool, it is essential to provide a drawing of the pool measured metre by metre. As specified by standard NF P 90-308, the gap between the inner side of the pool and the edge of the cover must be less than 70 mm.

Time needed to operate a pool measuring 5.00 x 10.00 m: 3 minutes for automatic opening or closing and 30 seconds for locking or unlocking the locking kits. The Rollin can be opened or closed by one person.

Use: all year round. To keep your cover in good working conditions, maintain a constant water level that matches the normal filtration rate of the swimming pool. The use of a water level regulator is essential. It must comply with the instruction manual.

Serviceability limits: The installation of a cover on overflow pools and/or pools with steps on the length side (removable steps on the side) is not compliant with the NF P90-308 standard. In this case other compliant systems should be used. Unless otherwise specified by the manufacturer, immersion alarms are not compatible with automatic slatted covers.

Wintering: the swimming pool must be wintered on the basis of its geographical location. Without lowering the water level, close the cover to its safety position and where applicable install a wintering net to protect the cover. If the water level is lowered so that the wall units are above the waterline, roll the cover in and secure the pool using a winter safety cover.

Packing list: for a swimming pool measuring 5,00 x 10,00. Opaque 84 PVC slats: 4 packages: 5,10 x 0,39 x 0,11 m - 190 kg. Solar polycarbonate slats and 69 PVC opaque slats: 5 packages: 5,10 x 0,25 x 0,20 m - 250 kg / Tube: 1 package: 5,10 x 0,15 x 0,15 m - 40 kg / Beam: 2 packages 5,05 x 0,25 x 0,20 m - 60 kg / Decking: 1 package 1,20 x 1,00 x 0,50 m - 120 kg / Motorisation kit: 1 package 0,80 x 0,60 x 0,50 m - 20 kg / Mechanics wall units: 1 package 0,30 x 0,20 x 0,20 m - 5 kg / Total weight: 435 - 445 kg.

Manufacturer: DEL SAS - ZA La Croix Rouge 35530 Brécé - France / www.del-piscine.fr

LIVEPOOL

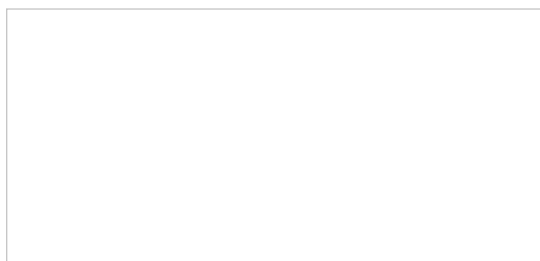
Opening and closing of the automatic cover with a smartphone thanks to the LivePool application.

DON'T FORGET

Protect your slat cover from UVs and dirt with the IVERNEA winter shift or the IVERNEA PLUS 4-season protective shift.



FOR MORE INFORMATION PLEASE ASK YOUR POOL EXPERT



CF GROUP - DEL SAS - ZA LA CROIX ROUGE - 35530 BRÉCÉ - FRANCE